

Ti20 Thermal Imager

The thermal imager for everyday maintenance and inspection



The Ti20 brings the power diagnostic capabilities of infrared thermal imaging technology within reach of a wider range of industrial applications. The unit is fully radiometric for detailed temperature analysis and tracking of critical components. The included InsideIR software facilitates setting up an inspection route using unique location names, measurement setup data and high / low temperature alarms. These routes can be uploaded to the imager for use as a routing guide.

High performance, designed for industrial use

- 128 x 96 detector provides a clear thermal image with accurate temperature measurements up to 350°C (662 °F)
- Fully radiometric for detailed temperature analysis and tracking of critical components
- Protected against dust and moisture (IP54 rated) to withstand harsh industrial environments
- Provides 3 hours continuous operation per battery charge (2 battery packs included)

Easy to use

- Large color LCD displays uncluttered image with data and routing instructions
- Facilitates one-handed point-, shoot- and image capture operation
- Assists fast inspections with clear on-screen step-by-step routing instructions

Complete solution offering lowest cost of ownership

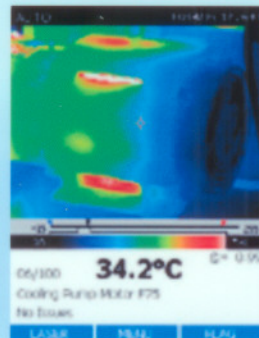
- Includes InsideIR™ software for unlimited use by every member of the maintenance team (no software license fees)
- Comes complete with all necessary accessories and professional application training material to ensure a fast return on investment

Typical applications

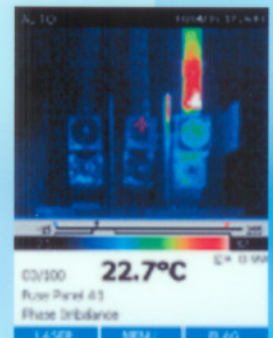
Industrial maintenance – Check whether repairs have been performed successfully.

Predictive maintenance – Identify electrical and mechanical problems before they cause failure.

Process monitoring – Real-time observation to ensure efficient and safe operation.



Cooling pump running at operating temperature.



Temperature difference between phases indicates an unbalanced load.

Specifications

		Fluke Ti20
Imaging performance	Field of view (FOV)	20° horizontal x 15° vertical
	Spatial resolution (IFOV)	2.73 mrad
	Min focus distance	0.15 m
	Thermal sensitivity (NETD)	≤0.2°C at 30°C
	Image frequency	30 Hz
	Focus	Manual
	Detector type	128 x 96 Focal Plane Array, Uncooled Microbolometer
Temperature measurement	Spectral band	7.5 µm to 14 µm
	Calibrated temperature range	-10°C to 380°C (14 °F to 662 °F)
	Accuracy	±2°C or 2% (whichever is greater)
	Measurement modes	Auto and manual level and span adjustment
Image presentation	Emissivity correction	0.1 to 1.0 (0.01 increments)
	Digital display	3" large color LCD
	LCD backlight	Selectable On/Off
Image and data storage	Palettes	Grayscale, reverse grayscale, rainbow, ironbow
	Storage medium	50 images internal flash
Interfaces and software	File formats supported	14 bit measurement data included. Exportable JPEG, BMP, GIF, PNG, TIFF, WMF, EXIF, EMP
	Interface	USB 2.0 (High speed)
Laser	Software	InsideIR; Full analysis and reporting software included
	Classification	Class II
Controls and adjustments	Set-up controls	Date/time, temperature units C/F, LCD intensity (high/normal/low).
	On-screen Indicators	Battery status, real time clock and center point temperature, range and span indication and high and low alarm settings
Power	Battery type	Rechargeable battery pack
	Battery operating time	3 hours continuous operation
	AC Operation	AC adapter 110/220 VAC, 50/60 Hz
	Power saving	Automatic shutdown and sleep modes (user specified)
Environmental and mechanical design	Operating temperature	0 to +50°C (32 °F to 122 °F)
	Storage temperature	-25 to +70°C (-13 °F to 158 °F)
	Relative humidity	Operating and storage 10% to 95%, non-condensing
	Water and dust resistant	IP54
	Weight (including batteries)	1.2 kg (2.6 lb)
	Camera size (HxWxD)	254 x 102 x 178 mm (10 in x 4 in x 7 in)
Other	Warranty	1 year



Included accessories

- Hard carrying case
- 2 Rechargeable Battery Packs
- Soft-sided carrying case
- Rechargeable battery pack
- AC/DC power adapter
- USB communication cable
- InsideIR reporting and analysis software
- Interactive CD with training materials
- Getting Started Guide

Ordering information

Fluke-Ti20 US Thermal Imager North America

Black & Associates

Thermal Imaging / Infrared Cameras

Electrical Testing Equipment

Certified Level III Thermographers

Infrared Certification Courses

Serving the Power Industry
for Over 30 Years

Owned & Operated by
Decorated American Veterans
of Foreign Wars

Small Business

CCR Registered, DUNS 098670995,
TIN 521178183, Cage Code 3T845

15210 Priceville Road Sparks, MD 21152

Phone: (410) 472-2416

Fax: (410) 472-4652

Website: www.tomwblack.com

E-mail: sales@tomwblack.com